

INSTALLATION INSTRUCTIONS
Suspended Lighting_299Lighting

**BELLART
MINI
SUSPENDED**

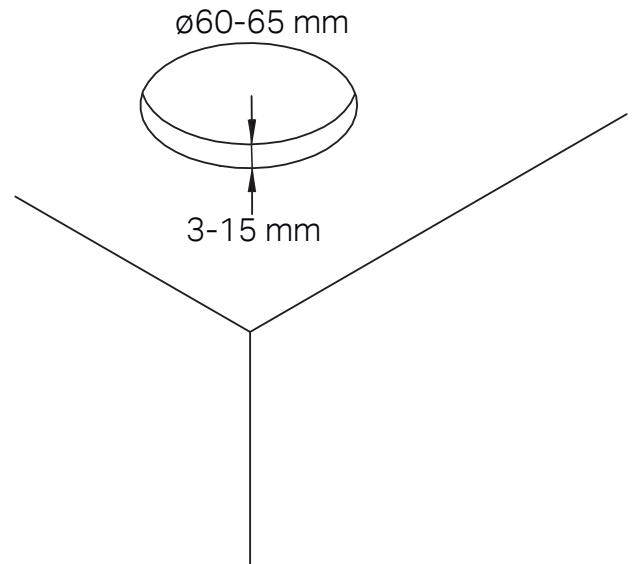
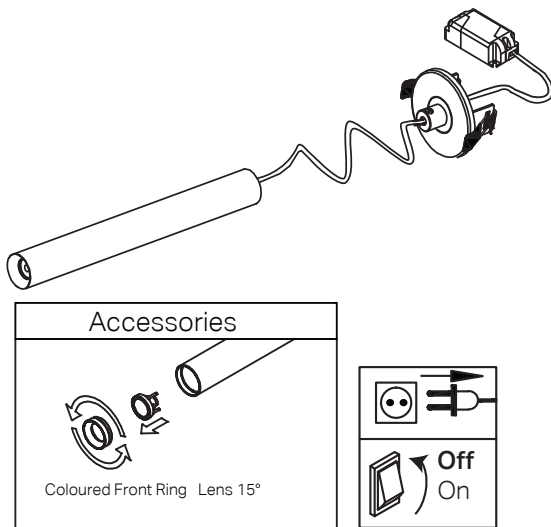
299

LIGHTING

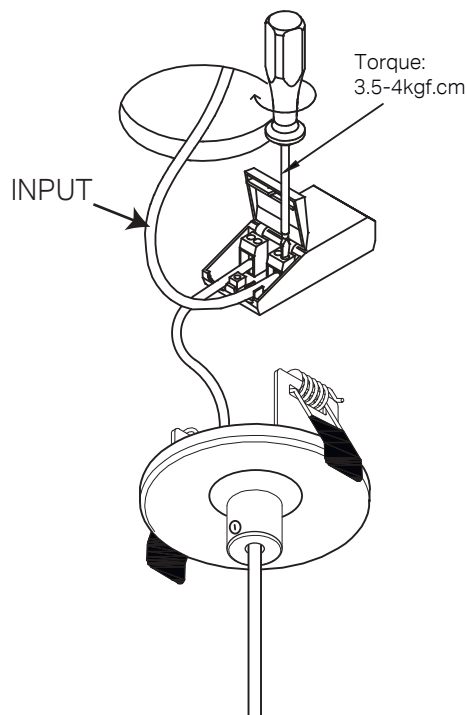
BELLART MINI SUSPENDED

INSTALLATION INSTRUCTIONS

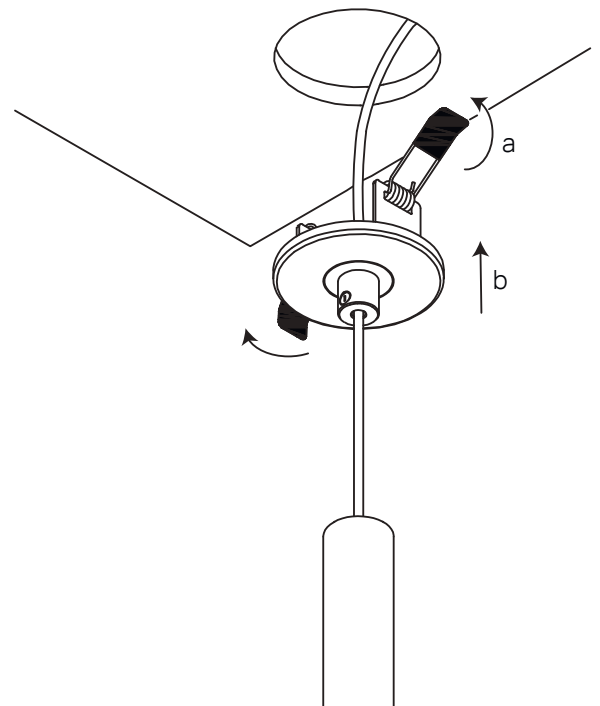
1. Driver Inside Ceiling Void



2.



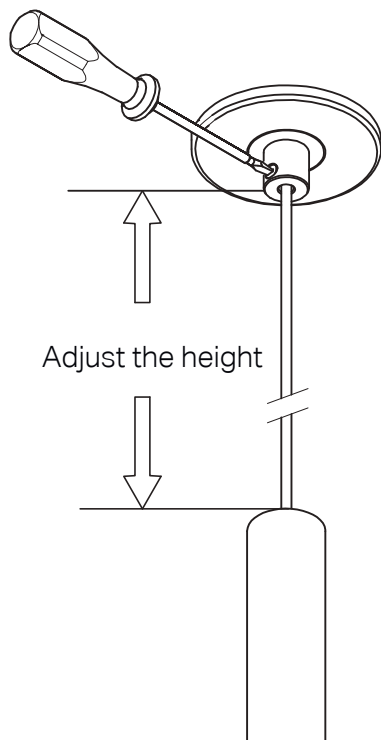
3.



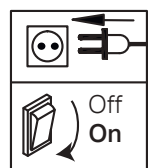
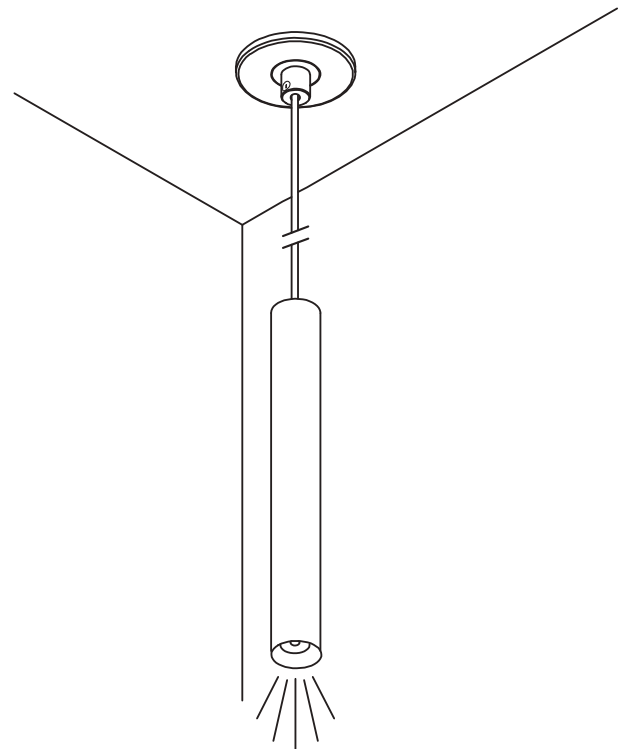
BELLART MINI SUSPENDED

INSTALLATION INSTRUCTIONS

4.



5.



Safety Notes

The safety of this luminaire is guaranteed only if you comply with these instructions; remember to conserve in a safe place
 Ensure adequate voltage and frequency is supplied to the equipment
 Disconnect from the main power before performing or any maintenance
 The installation should be carried out by qualified personnel
 For indoor use only



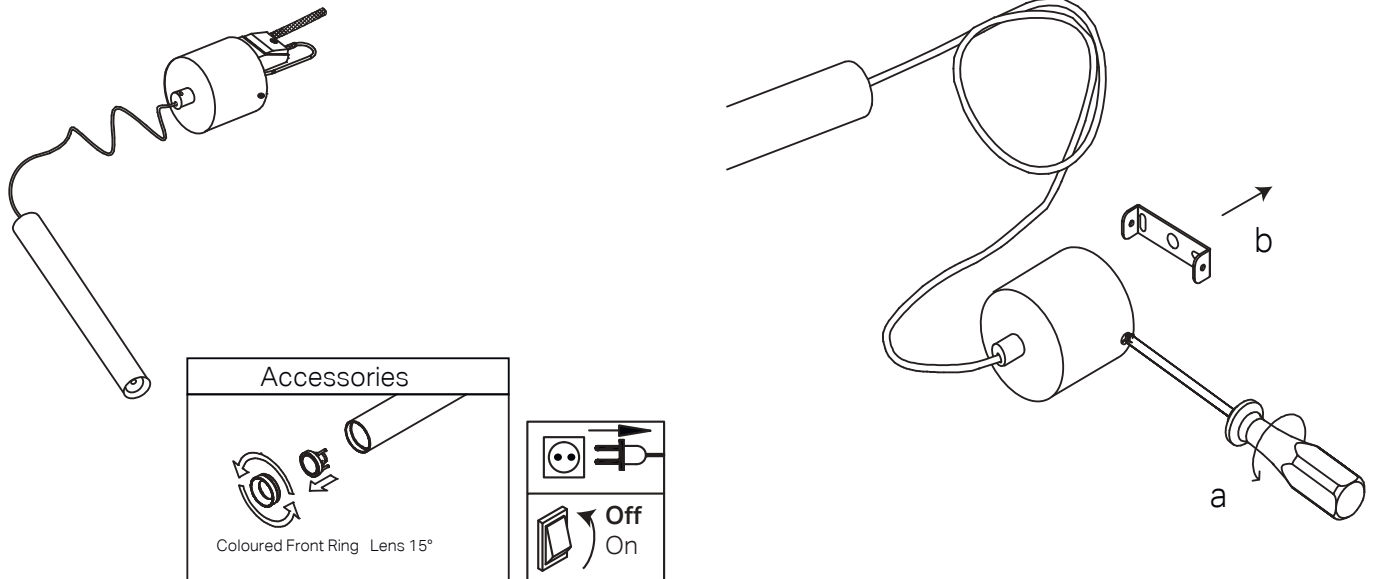
299

LIGHTING

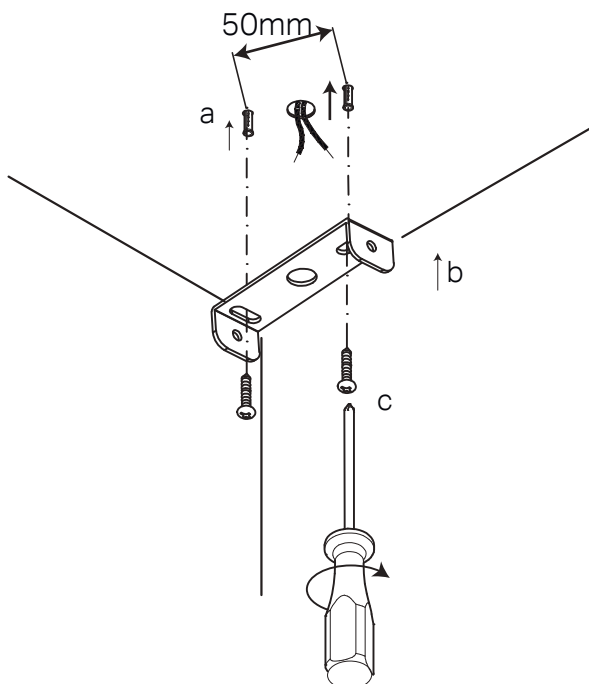
BELLART MINI SUSPENDED

INSTALLATION INSTRUCTIONS

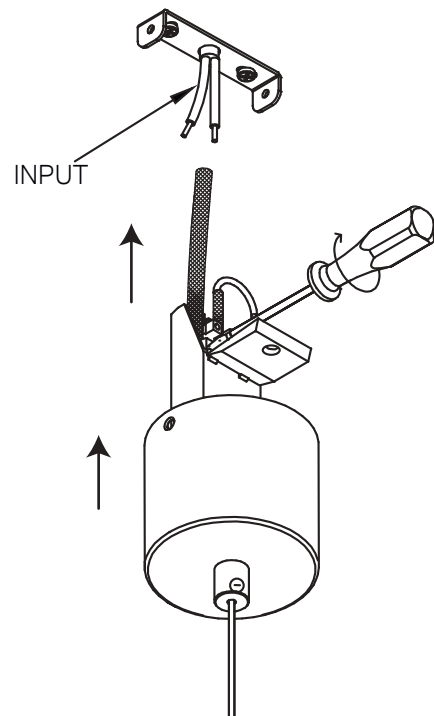
1. Driver Inside Canopy



2.



3.



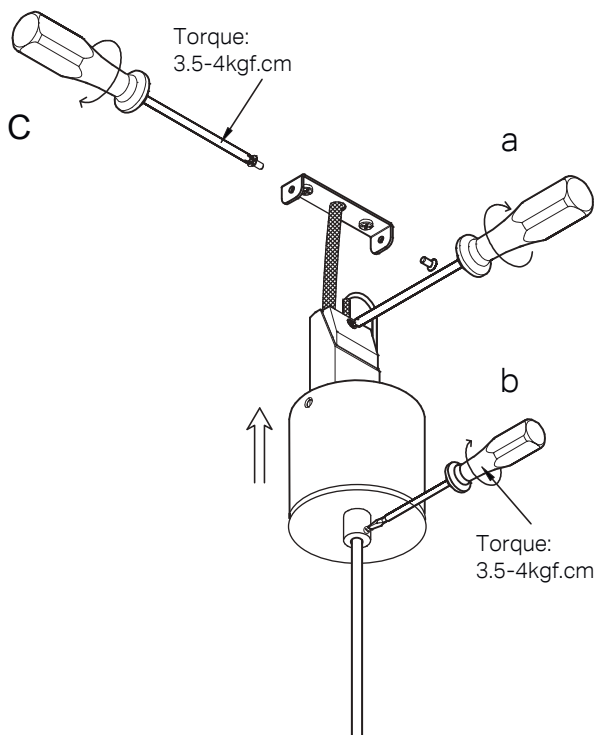
299

LIGHTING

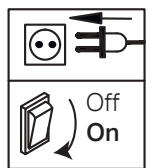
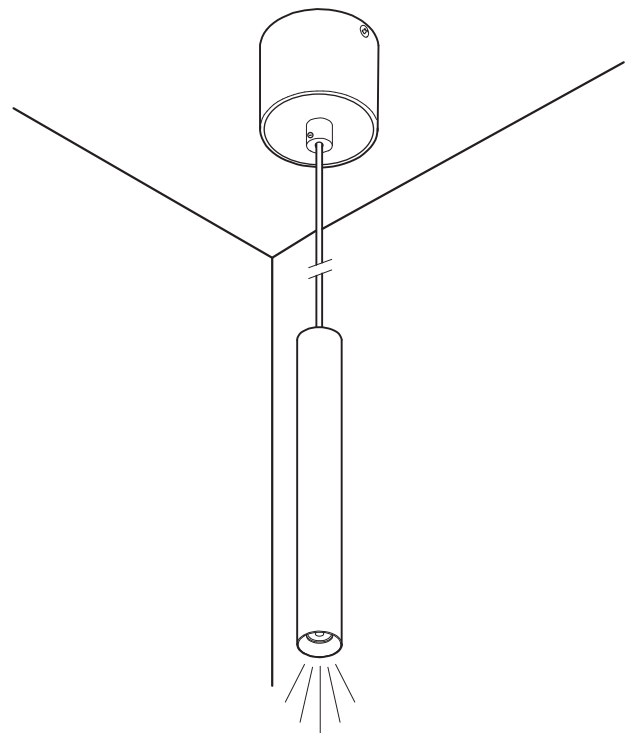
BELLART MINI SUSPENDED

INSTALLATION INSTRUCTIONS

4.



5.



Safety Notes

The safety of this luminaire is guaranteed only if you comply with these instructions; remember to conserve in a safe place
 Ensure adequate voltage and frequency is supplied to the equipment
 Disconnect from the main power before performing or any maintenance
 The installation should be carried out by qualified personnel
 For indoor use only

