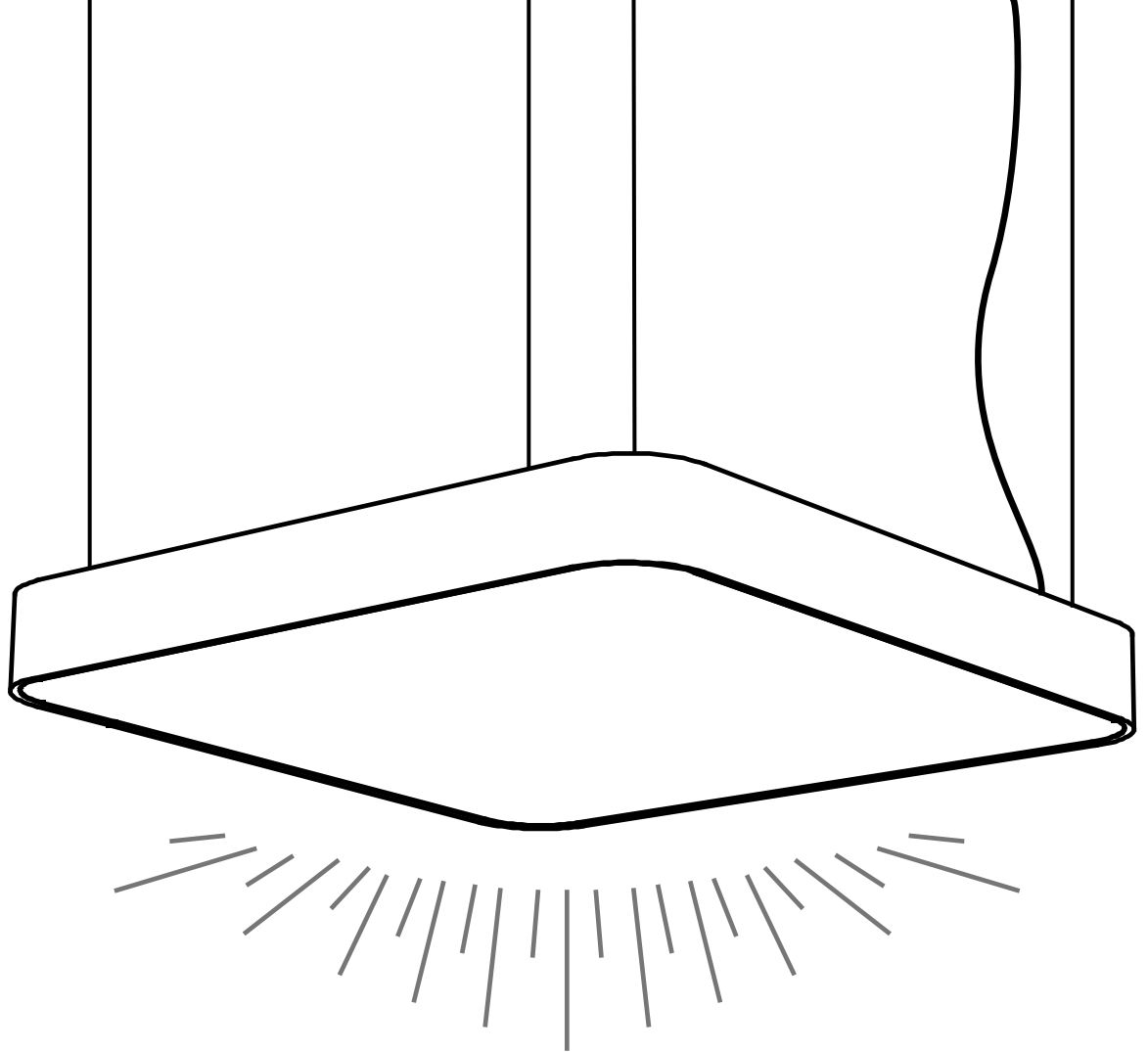


299
LIGHTING

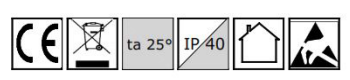
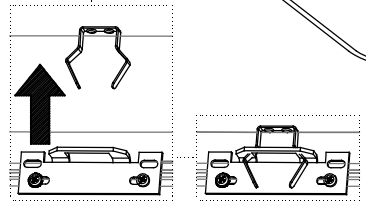
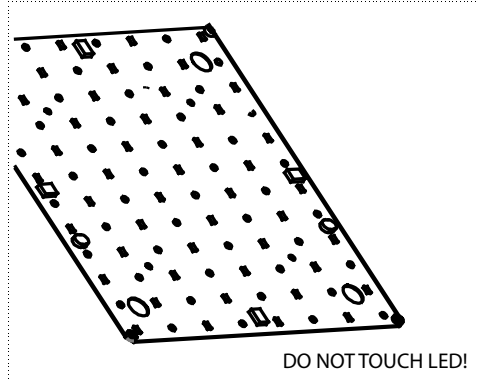
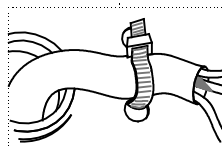
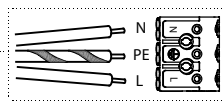
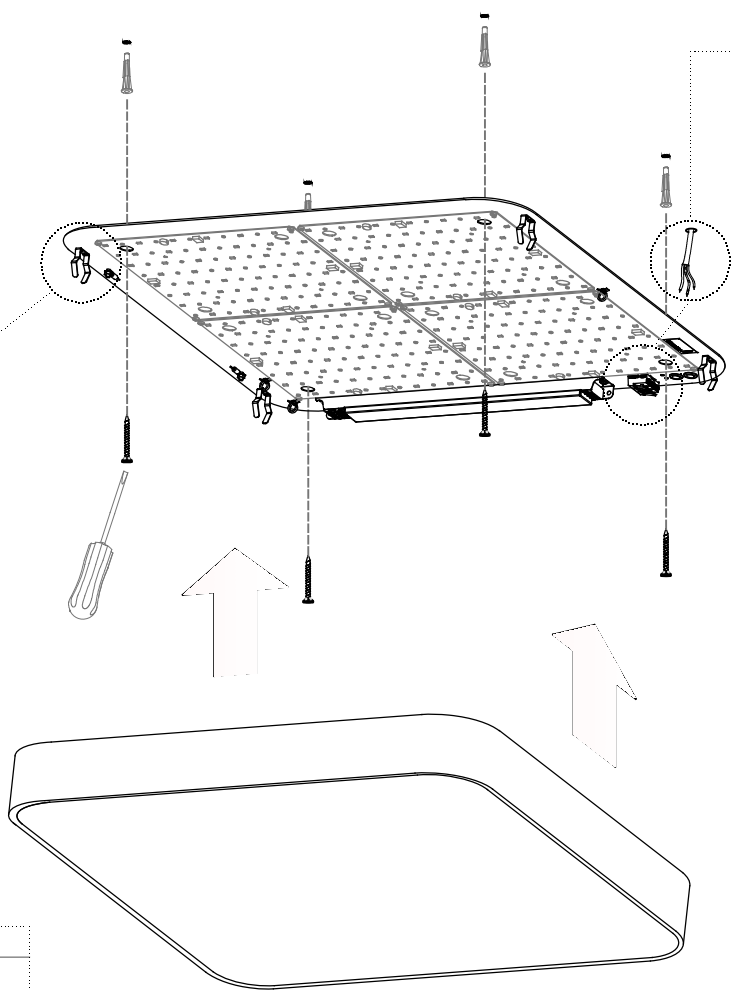
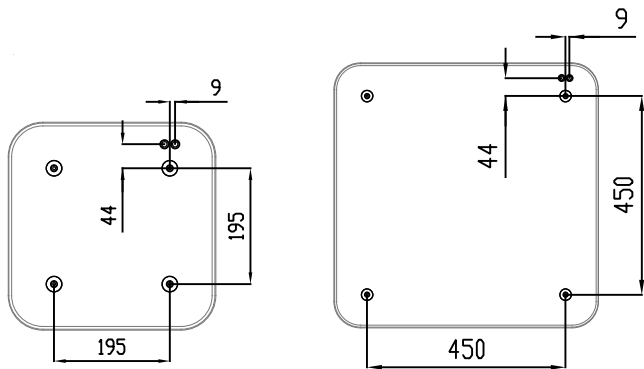
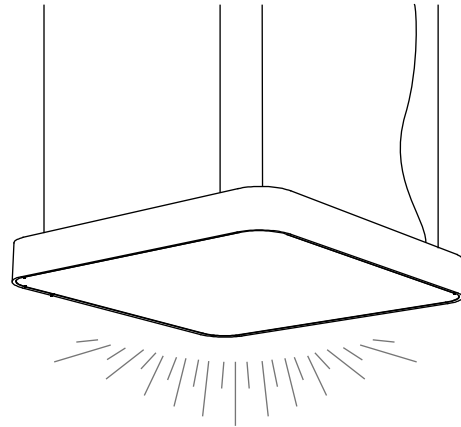


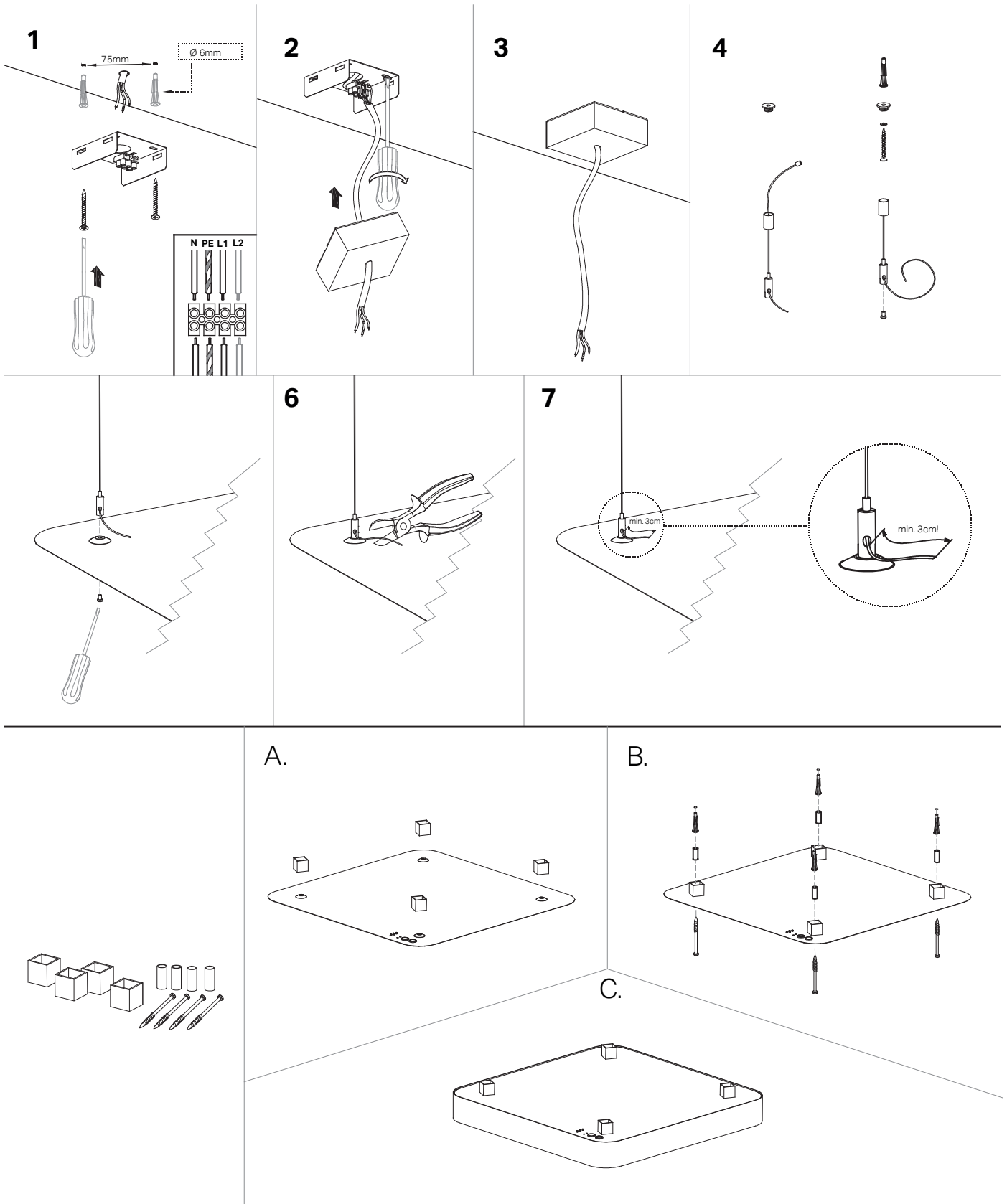
INSTALLATION INSTRUCTIONS
Suspended Lighting _ 299 Lighting

TARRAS
SUSPENDED

TARRAS SUSPENDED

INSTALLATION INSTRUCTIONS





The installation may only be carried out by an authorised specialist.
 Always switch-off the power supply before carrying out any maintenance.
 The manufacturer is not responsible for the incorrect use and assembly of its products.